

### ASME B16.47 Series A Class 150 Flange Dimensions

NPS	(OD)	Minimum Thickness WNF (t <sub>f</sub> )	Minimum Thickness Blind (t <sub>f</sub> )	Length Through Of Hub (Y)	Hub Diameter Base [Note2] (X)	Hub Diameter Top (A)	RF Diameter (R)	Drilling – Bolt Circle Diameter	Drilling – Number of Bolt Holes	Drilling – Diameter of Bolt Hole	Diameter of Bolt
26	34.25	2.63	2.63	4.69	26.62	26.00	29.50	31.75	24	1 <sup>3</sup> / <sub>8</sub>	1 <sup>1</sup> / <sub>4</sub>
28	36.50	2.75	2.75	4.88	28.62	28.00	31.50	34.00	28	1 <sup>3</sup> / <sub>8</sub>	1 <sup>1</sup> / <sub>4</sub>
30	38.75	2.88	2.88	5.32	30.75	30.00	33.75	36.00	28	1 <sup>3</sup> / <sub>8</sub>	1 <sup>1</sup> / <sub>4</sub>
32	41.75	3.13	3.13	5.63	32.75	32.00	36.00	38.50	28	1 <sup>5</sup> / <sub>8</sub>	1 <sup>1</sup> / <sub>2</sub>
34	43.75	3.19	3.19	5.82	34.75	34.00	38.00	40.50	32	1 <sup>5</sup> / <sub>8</sub>	1 <sup>1</sup> / <sub>2</sub>
36	46.00	3.50	3.50	6.13	36.75	36.00	40.25	42.75	32	1 <sup>5</sup> / <sub>8</sub>	1 <sup>1</sup> / <sub>2</sub>
38	48.75	3.38	3.38	6.13	39.00	38.00	42.25	45.25	32	1 <sup>5</sup> / <sub>8</sub>	1 <sup>1</sup> / <sub>2</sub>
40	50.75	3.50	3.50	6.38	41.00	40.00	44.25	47.25	36	1 <sup>5</sup> / <sub>8</sub>	1 <sup>1</sup> / <sub>2</sub>
42	53.00	3.75	3.75	6.69	43.00	42.00	47.00	49.50	36	1 <sup>5</sup> / <sub>8</sub>	1 <sup>1</sup> / <sub>2</sub>
44	55.25	3.94	3.94	6.94	45.00	44.00	49.00	51.75	40	1 <sup>5</sup> / <sub>8</sub>	1 <sup>1</sup> / <sub>2</sub>
46	57.25	4.00	4.00	7.25	47.12	46.00	51.00	53.75	40	1 <sup>5</sup> / <sub>8</sub>	1 <sup>1</sup> / <sub>2</sub>
48	59.50	4.19	4.19	7.50	49.12	48.00	53.50	56.00	44	1 <sup>5</sup> / <sub>8</sub>	1 <sup>1</sup> / <sub>2</sub>
50	61.75	4.32	4.32	7.94	51.25	50.00	55.50	58.25	44	1 <sup>7</sup> / <sub>8</sub>	1 <sup>3</sup> / <sub>4</sub>
52	64.00	4.50	4.50	8.19	53.25	52.00	57.50	60.50	44	1 <sup>7</sup> / <sub>8</sub>	1 <sup>3</sup> / <sub>4</sub>
54	66.25	4.69	4.69	8.44	55.25	54.00	59.50	62.75	44	1 <sup>7</sup> / <sub>8</sub>	1 <sup>3</sup> / <sub>4</sub>
56	68.75	4.82	4.82	8.94	57.38	56.00	62.00	65.00	48	1 <sup>7</sup> / <sub>8</sub>	1 <sup>3</sup> / <sub>4</sub>
58	71.00	5.00	5.00	9.19	59.38	58.00	64.00	67.25	48	1 <sup>7</sup> / <sub>8</sub>	1 <sup>3</sup> / <sub>4</sub>
60	73.00	5.13	5.13	9.38	61.38	60.00	66.00	69.25	52	1 <sup>7</sup> / <sub>8</sub>	1 <sup>3</sup> / <sub>4</sub>

**TELEPHONE: 0161 688 6999    WEBSITE: [www.hsbtechnical.co.uk](http://www.hsbtechnical.co.uk)    EMAIL: [sales@hsbtechnical.co.uk](mailto:sales@hsbtechnical.co.uk)**

### ASME B16.47 Series A Class 300 Flange Dimensions

NPS	(OD)	Minimum Thickness [Note1] WNF (tr)	Minimum Thickness [Note1] Blind (tr)	Length Through Of Hub (Y)	Hub Diameter Base [Note2] (X)	Hub Diameter Top (A)	RF Diameter (R)	Drilling – Bolt Circle Diameter	Drilling – Number of Bolt Holes	Drilling – Diameter of Bolt Hole	Diameter of Bolt
26	38.25	3.07	3.25	7.19	28.38	26.00	29.50	34.50	28	1 <sup>3</sup> / <sub>4</sub>	1 <sup>5</sup> / <sub>8</sub>
28	40.75	3.32	3.50	7.69	30.50	28.00	31.50	37.00	28	1 <sup>3</sup> / <sub>4</sub>	1 <sup>5</sup> / <sub>8</sub>
30	43.00	3.57	3.69	8.19	32.56	30.00	33.75	39.25	28	1 <sup>7</sup> / <sub>8</sub>	1 <sup>3</sup> / <sub>4</sub>
32	45.25	3.82	3.88	8.69	34.69	32.00	36.00	41.50	28	2	1 <sup>7</sup> / <sub>8</sub>
34	47.50	3.94	4.07	9.07	36.88	34.00	38.00	43.50	28	2	1 <sup>7</sup> / <sub>8</sub>
36	50.00	4.07	4.32	9.44	39.00	36.00	40.25	46.00	32	2 <sup>1</sup> / <sub>8</sub>	2
38	46.00	4.19	4.19	7.06	39.12	38.00	40.50	43.00	32	1 <sup>5</sup> / <sub>8</sub>	1 <sup>1</sup> / <sub>2</sub>
40	48.75	4.44	4.44	7.56	41.25	40.00	42.75	45.50	32	1 <sup>3</sup> / <sub>4</sub>	1 <sup>5</sup> / <sub>8</sub>
42	50.75	4.63	4.63	7.82	43.25	42.00	44.75	47.50	32	1 <sup>3</sup> / <sub>4</sub>	1 <sup>5</sup> / <sub>8</sub>
44	53.25	4.82	4.82	8.06	45.25	44.00	47.00	49.75	32	1 <sup>7</sup> / <sub>8</sub>	1 <sup>3</sup> / <sub>4</sub>
46	55.75	5.00	5.00	8.44	47.38	46.00	49.00	52.00	28	2	1 <sup>7</sup> / <sub>8</sub>
48	57.75	5.19	5.19	8.75	49.38	48.00	51.25	54.00	32	2	1 <sup>7</sup> / <sub>8</sub>
50	60.25	5.44	5.44	9.07	51.38	50.00	53.50	56.25	32	2 <sup>1</sup> / <sub>8</sub>	2
52	62.25	5.63	5.63	9.32	53.38	52.00	55.50	58.25	32	2 <sup>1</sup> / <sub>8</sub>	2
54	65.25	5.94	5.94	9.88	55.50	54.00	57.75	61.00	28	2 <sup>3</sup> / <sub>8</sub>	2 <sup>1</sup> / <sub>4</sub>
56	67.25	6.00	6.00	10.19	57.62	56.00	59.75	63.00	28	2 <sup>3</sup> / <sub>8</sub>	2 <sup>1</sup> / <sub>4</sub>
58	69.25	6.19	6.19	10.44	59.62	58.00	62.00	65.00	32	2 <sup>3</sup> / <sub>8</sub>	2 <sup>1</sup> / <sub>4</sub>
60	71.25	6.38	6.38	10.69	61.62	60.00	64.00	67.00	32	2 <sup>3</sup> / <sub>8</sub>	2 <sup>1</sup> / <sub>4</sub>

**TELEPHONE: 0161 688 6999    WEBSITE: [www.hsbtechnical.co.uk](http://www.hsbtechnical.co.uk)    EMAIL: [sales@hsbtechnical.co.uk](mailto:sales@hsbtechnical.co.uk)**

HSB Technical Services Limited, Company Registration No. 04308456, VAT Registration No. 785 1950 93  
Registered Office: 35 Westgate, Huddersfield, HD1 1PA

DOCUMENT REFERENCE: FLANGE TABLES    VERSION: 1.0

### ASME B16.47 Series A Class 600 Flange Dimensions

Normal Pipe Size Of Flange	Outside Diameter	Min. Thickness Of		Outside Diameter of Raised Face	Hub Diameter	Length Thru Hub	Approx. Weight Table In (lbs)			Drilling		
		WN Flange	BLRF Flange				WN Flange	WN Flange	BLRF Flange	Number Holes	Diameter Holes	Bolt Circle Diameter
26	40	4.25	4.94	29.50	29.44	8.75	940	1760	28	2	36	
28	42.25	4.38	5.19	31.50	31.62	9.25	160	2061	28	2.12	38	
30	44.50	4.50	5.50	33.75	33.94	9.75	1210	2423	28	2.12	40.25	
32	47	4.63	5.81	36	36.15	10.25	1375	2858	28	2.38	42.50	
34	49	4.75	6.06	38	38.31	10.62	1540	3237	28	2.38	44.50	
36	51.75	4.88	6.38	40.25	40.62	11.12	1705	3800	28	2.62	47	
38	50	6	6.12	41.50	40.25	10	1470	3405	28	2.38	45.75	
40	52	6.25	6.38	43.75	42.25	10.38	1630	3838	32	2.38	47.75	
42	55.25	6.63	6.75	46	44.38	11	2030	4585	28	2.62	50.50	
44	57.25	6.81	7	48.25	46.50	11.38	2160	5105	32	2.62	52.50	
46	59.50	7.06	7.31	50.25	48.62	11.81	2410	5758	32	2.62	54.75	
48	62.75	7.44	7.69	52.50	50.75	12.44	2855	6737	32	2.88	57.50	
50	65.75	7.75	8	54.50	52.88	12.94	3330	7695	28	3.12	60	
52	67.75	8	8.25	56.50	54.88	13.25	3560	8425	32	3.12	62	
54	70	8.25	8.56	58.75	57	13.75	3920	9333	32	3.12	64.25	
56	73	8.56	8.88	60.75	59.12	14.25	4280	10530	32	3.38	66.75	
58	75	8.75	9.12	63	61.12	14.56	4640	11414	32	3.38	68.75	
60	78.50	9.19	9.56	65.25	63.38	15.31	5000	13108	28	3.62	71.75	

**TELEPHONE: 0161 688 6999    WEBSITE: [www.hsbtechnical.co.uk](http://www.hsbtechnical.co.uk)    EMAIL: [sales@hsbtechnical.co.uk](mailto:sales@hsbtechnical.co.uk)**

### ASME B16.47 Series A Class 900 Flange Dimensions

NPS	Outside Diameter (OD)	Minimum Thickness [Note1] – WNF (tr)	Minimum Thickness [Note1] – Blind (tr)	Length Through Hub (Y)	Hub Diameter Base [Note2] (X)	Hub Dia. Top (A)	Raised Face Dia. (R)	Drilling – Bolt Circle Diameter	Drilling – Number of Bolt Holes	Drilling – Diameter of Bolt Hole	Diameter of Bolt
26	42.75	5.50	6.31	11.25	30.50	26.00	29.50	37.50	20	2 <sup>7</sup> / <sub>8</sub>	2 <sup>3</sup> / <sub>4</sub>
28	46.00	5.62	6.75	11.75	32.75	28.00	31.50	40.25	20	3 <sup>1</sup> / <sub>8</sub>	3
30	48.50	5.88	7.18	12.25	35.00	30.00	33.75	42.75	20	3 <sup>1</sup> / <sub>8</sub>	3
32	51.75	6.25	7.62	13.00	37.25	32.00	36.00	45.50	20	3 <sup>3</sup> / <sub>8</sub>	3 <sup>1</sup> / <sub>4</sub>
34	55.00	6.50	8.06	13.75	39.62	34.00	38.00	48.25	20	3 <sup>5</sup> / <sub>8</sub>	3 <sup>1</sup> / <sub>2</sub>
36	57.50	6.75	8.44	14.25	41.88	36.00	40.25	50.75	20	3 <sup>5</sup> / <sub>8</sub>	3 <sup>1</sup> / <sub>2</sub>
38	57.50	7.50	8.50	13.88	42.25	38.00	43.25	50.75	20	3 <sup>5</sup> / <sub>8</sub>	3 <sup>1</sup> / <sub>2</sub>
40	59.50	7.75	8.81	14.31	44.38	40.00	45.75	52.75	24	3 <sup>5</sup> / <sub>8</sub>	3 <sup>1</sup> / <sub>2</sub>
42	61.50	8.12	9.12	14.62	46.31	42.00	47.75	54.75	24	3 <sup>5</sup> / <sub>8</sub>	3 <sup>1</sup> / <sub>2</sub>
44	64.88	8.44	9.56	15.38	48.62	44.00	50.00	57.62	24	3 <sup>7</sup> / <sub>8</sub>	3 <sup>3</sup> / <sub>4</sub>
46	68.25	8.88	10.06	16.18	50.88	46.00	52.50	60.50	24	4 <sup>1</sup> / <sub>8</sub>	4
48	70.25	9.19	10.38	16.50	52.88	48.00	54.50	62.50	24	4 <sup>1</sup> / <sub>8</sub>	4

**TELEPHONE: 0161 688 6999    WEBSITE: [www.hsbtechnical.co.uk](http://www.hsbtechnical.co.uk)    EMAIL: [sales@hsbtechnical.co.uk](mailto:sales@hsbtechnical.co.uk)**

HSB Technical Services Limited, Company Registration No. 04308456, VAT Registration No. 785 1950 93  
 Registered Office: 35 Westgate, Huddersfield, HD1 1PA  
 DOCUMENT REFERENCE: FLANGE TABLES    VERSION: 1.0

### ASME B16.47 Series B Class 150 Flange Dimensions

NPS	(OD)	Minimum Thickness [Note1] WNF (t <sub>r</sub> )	Minimum Thickness [Note1] Blind (t <sub>r</sub> )	Length Through Of Hub (Y)	Hub Diameter Base [Note2] (X)	Hub Diameter Top (A)	RF Diameter (R)	Drilling – Bolt Circle Diameter	Drilling – Number of Bolt Holes	Drilling – Diameter of Bolt Hole	Diameter of Bolt
26	30.94	1.57	1.69	3.44	26.94	26.06	28.00	29.31	36	7/8	3/4
28	32.94	1.69	1.82	3.69	28.94	28.06	30.00	31.31	40	7/8	3/4
30	34.94	1.69	1.94	3.88	31.00	30.06	32.00	33.31	44	7/8	3/4
32	37.06	1.75	2.07	4.19	33.06	32.06	34.00	35.44	48	7/8	3/4
34	39.56	1.88	2.19	4.28	35.12	34.06	36.25	37.69	40	1	7/8
36	41.62	2.00	2.25	4.57	37.19	36.06	38.25	39.75	44	1	7/8
38	44.25	2.07	2.44	4.82	39.25	38.12	40.25	42.12	40	1 1/8	1
40	46.25	2.13	2.57	5.00	41.31	40.12	42.50	44.12	44	1 1/8	1
42	48.25	2.25	2.63	5.19	43.38	42.12	44.50	46.12	48	1 1/8	1
44	50.25	2.32	2.75	5.32	45.38	44.12	46.50	48.12	52	1 1/8	1
46	52.81	2.38	2.88	5.63	47.44	46.12	48.62	50.56	40	1 1/4	1 1/8
48	54.81	2.50	3.00	5.82	48.50	48.12	50.75	52.56	44	1 1/4	1 1/8
50	56.81	2.63	3.13	6.00	51.50	50.12	52.75	54.56	48	1 1/4	1 1/8
52	58.81	2.69	3.25	6.13	53.56	52.12	54.75	56.56	52	1 1/4	1 1/8
54	61.00	2.75	3.38	6.32	55.62	54.12	56.75	58.75	56	1 1/4	1 1/8
56	63.00	2.82	3.50	6.50	57.69	56.12	58.75	60.75	60	1 1/4	1 1/8
58	65.94	2.88	3.62	6.82	59.69	58.12	60.75	63.44	48	1 3/8	1 1/4
60	67.94	2.94	3.75	7.00	61.81	60.12	63.00	65.44	52	1 3/8	1 1/4

**TELEPHONE: 0161 688 6999    WEBSITE: [www.hsbtechnical.co.uk](http://www.hsbtechnical.co.uk)    EMAIL: [sales@hsbtechnical.co.uk](mailto:sales@hsbtechnical.co.uk)**

### ASME B16.47 Series B Class 300 Flange Dimensions

NPS	(OD)	Minimum Thickness [Note1] WNF (t <sub>f</sub> )	Minimum Thickness [Note1] Blind (t <sub>f</sub> )	Length Through Of Hub (Y)	Hub Diameter Base [Note2] (X)	Hub Diameter Top (A)	RF Diameter (R)	Drilling – Bolt Circle Diameter	Drilling – Number of Bolt Holes	Drilling – Diameter of Bolt Hole	Diameter of Bolt
26	34.12	3.44	3.44	5.63	27.62	26.19	29.00	31.62	32	1 <sup>3</sup> / <sub>8</sub>	1 <sup>1</sup> / <sub>4</sub>
28	36.25	3.44	3.44	5.81	29.75	28.19	31.00	33.75	36	1 <sup>3</sup> / <sub>8</sub>	1 <sup>1</sup> / <sub>4</sub>
30	39.00	3.63	3.63	6.16	32.00	30.25	33.25	36.25	36	1 <sup>1</sup> / <sub>2</sub>	1 <sup>3</sup> / <sub>8</sub>
32	41.50	4.00	4.00	6.56	34.00	32.35	35.50	38.50	32	1 <sup>5</sup> / <sub>8</sub>	1 <sup>1</sup> / <sub>2</sub>
34	43.62	4.00	4.00	6.75	36.12	34.25	37.50	40.62	36	1 <sup>5</sup> / <sub>8</sub>	1 <sup>1</sup> / <sub>2</sub>
36	46.12	4.00	4.00	7.06	38.00	36.25	39.75	42.88	32	1 <sup>3</sup> / <sub>4</sub>	1 <sup>5</sup> / <sub>8</sub>
38	48.12	4.31	4.31	7.50	40.00	38.25	41.75	44.88	36	1 <sup>3</sup> / <sub>4</sub>	1 <sup>5</sup> / <sub>8</sub>
40	50.12	4.50	4.50	7.75	42.00	40.25	43.88	46.88	40	1 <sup>3</sup> / <sub>4</sub>	1 <sup>5</sup> / <sub>8</sub>
42	52.50	4.63	4.63	8.00	44.00	42.31	46.00	49.00	36	1 <sup>7</sup> / <sub>8</sub>	1 <sup>3</sup> / <sub>4</sub>
44	54.50	4.94	4.94	8.38	46.19	44.31	48.00	51.00	40	1 <sup>7</sup> / <sub>8</sub>	1 <sup>3</sup> / <sub>4</sub>
46	57.50	5.00	5.06	8.69	48.38	46.31	50.00	53.75	36	2	1 <sup>7</sup> / <sub>8</sub>
48	59.50	5.00	5.25	8.75	50.31	48.31	52.25	55.75	40	2	1 <sup>7</sup> / <sub>8</sub>
50	61.50	5.38	5.44	9.19	52.38	50.31	54.25	57.75	44	2	1 <sup>7</sup> / <sub>8</sub>
52	63.50	5.56	5.61	9.50	54.44	52.31	56.25	59.75	48	2	1 <sup>7</sup> / <sub>8</sub>
54	65.88	5.32	5.81	9.38	56.50	54.31	58.25	62.12	48	2	1 <sup>7</sup> / <sub>8</sub>
56	69.50	6.00	6.12	10.50	58.81	56.31	60.50	65.00	36	2 <sup>3</sup> / <sub>8</sub>	2 <sup>1</sup> / <sub>4</sub>
58	71.94	6.00	6.31	10.75	60.94	58.31	62.75	67.44	40	2 <sup>3</sup> / <sub>8</sub>	2 <sup>1</sup> / <sub>4</sub>
60	73.94	5.88	6.50	10.63	62.94	60.31	65.00	69.44	40	2 <sup>3</sup> / <sub>8</sub>	2 <sup>1</sup> / <sub>4</sub>

**TELEPHONE: 0161 688 6999    WEBSITE: [www.hsbtechnical.co.uk](http://www.hsbtechnical.co.uk)    EMAIL: [sales@hsbtechnical.co.uk](mailto:sales@hsbtechnical.co.uk)**

HSB Technical Services Limited, Company Registration No. 04308456, VAT Registration No. 785 1950 93  
Registered Office: 35 Westgate, Huddersfield, HD1 1PA

DOCUMENT REFERENCE: FLANGE TABLES    VERSION: 1.0



### ASME B16.47 Series B Class 600 Flange Dimensions

NPS	(OD)	Minimum Thickness [Note1] WNF (t <sub>f</sub> )	Minimum Thickness [Note1] Blind (t <sub>r</sub> )	Length Through Of Hub (Y)	Hub Diameter Base [Note2] (X)	Hub Diameter Top (A)	RF Diameter (R)	Drilling – Bolt Circle Diameter	Drilling – Number of Bolt Holes	Drilling – Diameter of Bolt Hole	Diameter of Bolt
26	35.00	4.38	4.38	7.12	27.50	26.00	28.62	31.75	28	1 <sup>3</sup> / <sub>4</sub>	1 <sup>5</sup> / <sub>8</sub>
28	37.50	4.56	4.56	7.50	29.62	28.00	30.88	34.00	28	1 <sup>7</sup> / <sub>8</sub>	1 <sup>3</sup> / <sub>4</sub>
30	40.25	4.94	5.00	8.06	31.75	30.00	33.12	36.50	28	2	1 <sup>7</sup> / <sub>8</sub>
32	42.75	5.12	5.31	8.50	33.88	32.00	35.25	38.75	28	2 <sup>1</sup> / <sub>8</sub>	2
34	45.75	5.56	5.68	9.19	36.00	34.00	37.50	41.50	24	2 <sup>3</sup> / <sub>8</sub>	2 <sup>1</sup> / <sub>4</sub>
36	47.75	5.75	5.94	9.56	38.12	36.00	39.75	43.50	28	2 <sup>3</sup> / <sub>8</sub>	2 <sup>1</sup> / <sub>4</sub>
38	50.00	6.00	6.12	10.00	40.25	38.00	41.50	45.75	28	2 <sup>3</sup> / <sub>8</sub>	2 <sup>1</sup> / <sub>4</sub>
40	52.00	6.25	6.38	10.38	42.25	40.00	43.75	47.75	32	2 <sup>3</sup> / <sub>8</sub>	2 <sup>1</sup> / <sub>4</sub>
42	55.25	6.62	6.75	11.00	44.38	42.00	46.00	50.50	28	2 <sup>5</sup> / <sub>8</sub>	2 <sup>1</sup> / <sub>2</sub>
44	57.25	6.81	7.00	11.38	46.50	44.00	48.25	52.50	32	2 <sup>5</sup> / <sub>8</sub>	2 <sup>1</sup> / <sub>2</sub>
46	59.50	7.06	7.31	11.81	48.62	46.00	50.25	54.75	32	2 <sup>5</sup> / <sub>8</sub>	2 <sup>1</sup> / <sub>2</sub>
48	62.75	7.44	7.69	12.44	50.75	48.00	52.25	57.50	32	2 <sup>7</sup> / <sub>8</sub>	2 <sup>3</sup> / <sub>4</sub>
50	65.75	7.75	8.00	12.94	52.88	50.00	54.50	60.00	28	3 <sup>1</sup> / <sub>8</sub>	3
52	67.75	8.00	8.25	13.25	54.88	52.00	56.50	62.00	32	3 <sup>1</sup> / <sub>8</sub>	3
54	70.00	8.25	8.56	13.75	57.00	54.00	58.75	64.25	32	3 <sup>1</sup> / <sub>8</sub>	3
56	73.00	8.56	8.88	14.25	59.12	56.00	60.75	66.75	32	3 <sup>3</sup> / <sub>8</sub>	3 <sup>1</sup> / <sub>4</sub>
58	75.00	8.75	9.12	14.56	61.12	58.00	63.00	68.75	32	3 <sup>3</sup> / <sub>8</sub>	3 <sup>1</sup> / <sub>4</sub>
60	78.50	9.19	9.56	15.31	63.38	60.00	65.25	71.75	28	3 <sup>5</sup> / <sub>8</sub>	3 <sup>1</sup> / <sub>2</sub>

**TELEPHONE: 0161 688 6999    WEBSITE: [www.hsbtechnical.co.uk](http://www.hsbtechnical.co.uk)    EMAIL: [sales@hsbtechnical.co.uk](mailto:sales@hsbtechnical.co.uk)**

### ASME B16.47 Series B Class 900 Flange Dimensions

NPS	(OD)	Minimum Thickness [Note1] WNF (t <sub>f</sub> )	Minimum Thickness [Note1] Blind (t <sub>f</sub> )	Length Through Of Hub (Y)	Hub Diameter Base [Note2] (X)	Hub Diameter Top (A)	RF Diameter (R)	Drilling – Bolt Circle Diameter	Drilling – Number of Bolt Holes	Drilling – Diameter of Bolt Hole	Diameter of Bolt
26	40.25	5.31	6.06	10.19	29.25	26.00	30.00	35.50	20	2 <sup>5</sup> / <sub>8</sub>	2 <sup>1</sup> / <sub>2</sub>
28	43.50	5.81	6.56	10.88	31.38	28.00	32.25	38.25	20	2 <sup>7</sup> / <sub>8</sub>	2 <sup>3</sup> / <sub>4</sub>
30	46.50	6.12	6.93	11.38	33.50	30.00	34.50	40.75	20	3 <sup>1</sup> / <sub>8</sub>	3
32	48.75	6.31	7.31	11.94	35.75	32.00	36.50	43.00	20	3 <sup>1</sup> / <sub>8</sub>	3
34	51.75	6.75	7.68	12.56	37.88	34.00	39.00	45.50	20	3 <sup>3</sup> / <sub>8</sub>	3 <sup>1</sup> / <sub>4</sub>
36	53.00	6.81	7.94	12.81	40.00	36.00	40.50	47.25	24	3 <sup>1</sup> / <sub>8</sub>	3
38	57.50	7.50	8.50	13.88	42.25	38.00	43.25	50.75	20	3 <sup>5</sup> / <sub>8</sub>	3 <sup>1</sup> / <sub>2</sub>
40	59.50	7.75	8.81	14.31	44.38	40.00	45.75	52.75	24	3 <sup>5</sup> / <sub>8</sub>	3 <sup>1</sup> / <sub>2</sub>
42	61.50	8.12	9.12	14.62	46.31	42.00	47.75	54.75	24	3 <sup>5</sup> / <sub>8</sub>	3 <sup>1</sup> / <sub>2</sub>
44	64.88	8.44	9.56	15.38	48.62	44.00	50.00	57.62	24	3 <sup>7</sup> / <sub>8</sub>	3 <sup>3</sup> / <sub>4</sub>
46	68.25	8.88	10.06	16.18	50.88	46.00	52.50	60.50	24	4 <sup>1</sup> / <sub>8</sub>	4
48	70.25	9.19	10.38	16.50	52.88	48.00	54.50	62.50	24	4 <sup>1</sup> / <sub>8</sub>	4

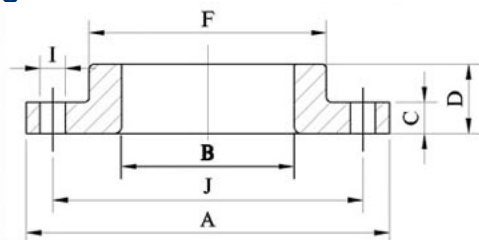
**TELEPHONE: 0161 688 6999    WEBSITE: [www.hsbtechnical.co.uk](http://www.hsbtechnical.co.uk)    EMAIL: [sales@hsbtechnical.co.uk](mailto:sales@hsbtechnical.co.uk)**

HSB Technical Services Limited, Company Registration No. 04308456, VAT Registration No. 785 1950 93  
Registered Office: 35 Westgate, Huddersfield, HD1 1PA

DOCUMENT REFERENCE: FLANGE TABLES    VERSION: 1.0



### ASME B16.47 Series B Slip On Flange Dimensions



Normal Pipe Size	A	B	I	Holes	C	D	F	G	Weight
22"	750	563.6	35	20	46	80	610	641	72.66
26"	870	665.2	35	24	68.5	90	724	749	120.47
28"	925	716	35	28	71.5	95	781	800	136.16
30"	985	766.8	35	28	74.5	100	832	857	161.04
32"	1060	817.6	41	28	81	106	889	914	205.07
34"	1110	868.4	41	32	82.5	110	940	965	216.76
36"	1170	919.2	41	32	90.5	120	997	1022	265
38"	1240	970	41	32	87.4	120	1060	1073	297.15
40"	1290	1020	41	36	90.5	125	1111	1124	319.65
42"	1345	1071.6	41	36	97	130	1168	1194	363.84
44"	1405	1122.4	41	40	102	136	1219	1245	414.1
46"	1455	1173.2	41	40	103	144	1270	1295	437
48"	1510	1224	41	44	108	150	1327	1359	484.52
50"	1570	1274.8	48	44	111	160	1378	1410	521.23
52"	1625	1325.6	48	44	116	170	1435	1460	581.51
54"	1685	1376.4	48	44	121	178	1492	1511	652.63
56"	1745	1427.2	48	48	124	188	1540	1575	713.31
58"	1805	1478	48	129	195	1590	1626	799.81	
60"	1855	1528.8	48	52	132	200	1657	1676	836.15

**TELEPHONE: 0161 688 6999 WEBSITE: [www.hsbtechnical.co.uk](http://www.hsbtechnical.co.uk) EMAIL: [sales@hsbtechnical.co.uk](mailto:sales@hsbtechnical.co.uk)**

HSB Technical Services Limited, Company Registration No. 04308456, VAT Registration No. 785 1950 93  
Registered Office: 35 Westgate, Huddersfield, HD1 1PA

DOCUMENT REFERENCE: FLANGE TABLES VERSION: 1.0